

EMINENT

Solina String Ensemble

Midi Installation Guide



1. Material list

- Doepfer midi kit : MTC 64
- Electronic board : 13 cm x 10 cm
- Flat cable : 1m x 50 wires
- Optocoupler : 13 x CNY 74-4
- Support IC : 13 x 16 pins
- Resistor : 49 x 820 ohm
- Midi socket : female 5 connectors 180°
- Divers cable : 90 cm (2 wires) for power, 30 cm (2 wires) for midi

2. Solina mechanical modification

- disassemble the rear panel (put out the connector and the 4 screw) **SEE PIC 1**
- remove the jack LOW OUTPUT
- adjust drill to the midi connector diameter
- need to soldering the 30 cm 2 wires cable : PIN 4 & 5 **SEE PIC 2**
- place the midi connector **SEE PIC 3**
- interface board and midi converter board need some support
- need to drill 2 or 4 holes for each board **SEE PIC 4**



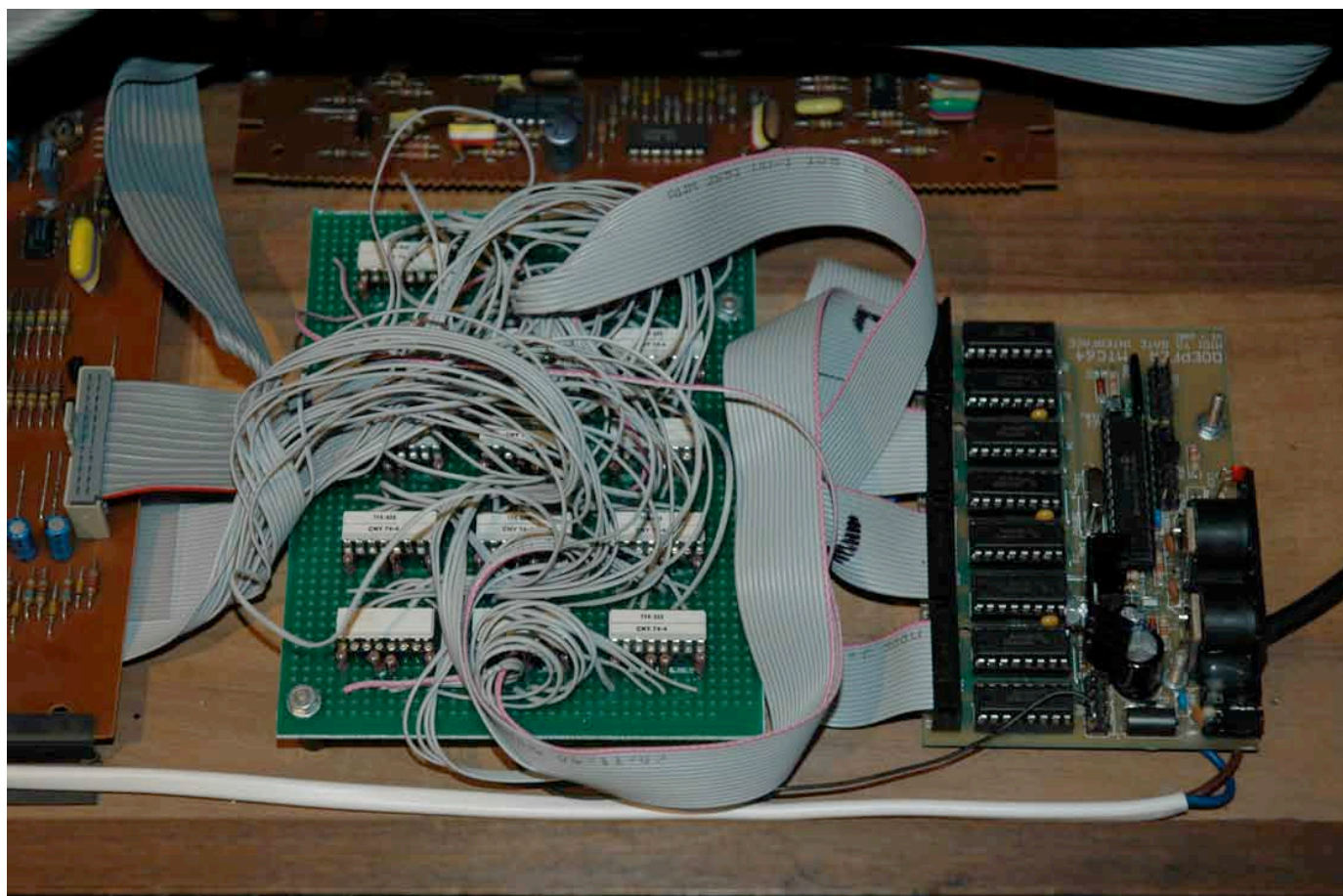
PIC 1



PIC 2



PIC 3



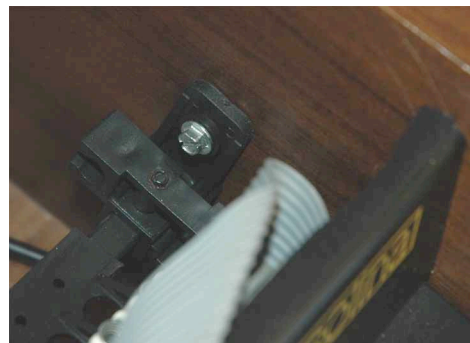
PIC 4

3. Solina electronical modification

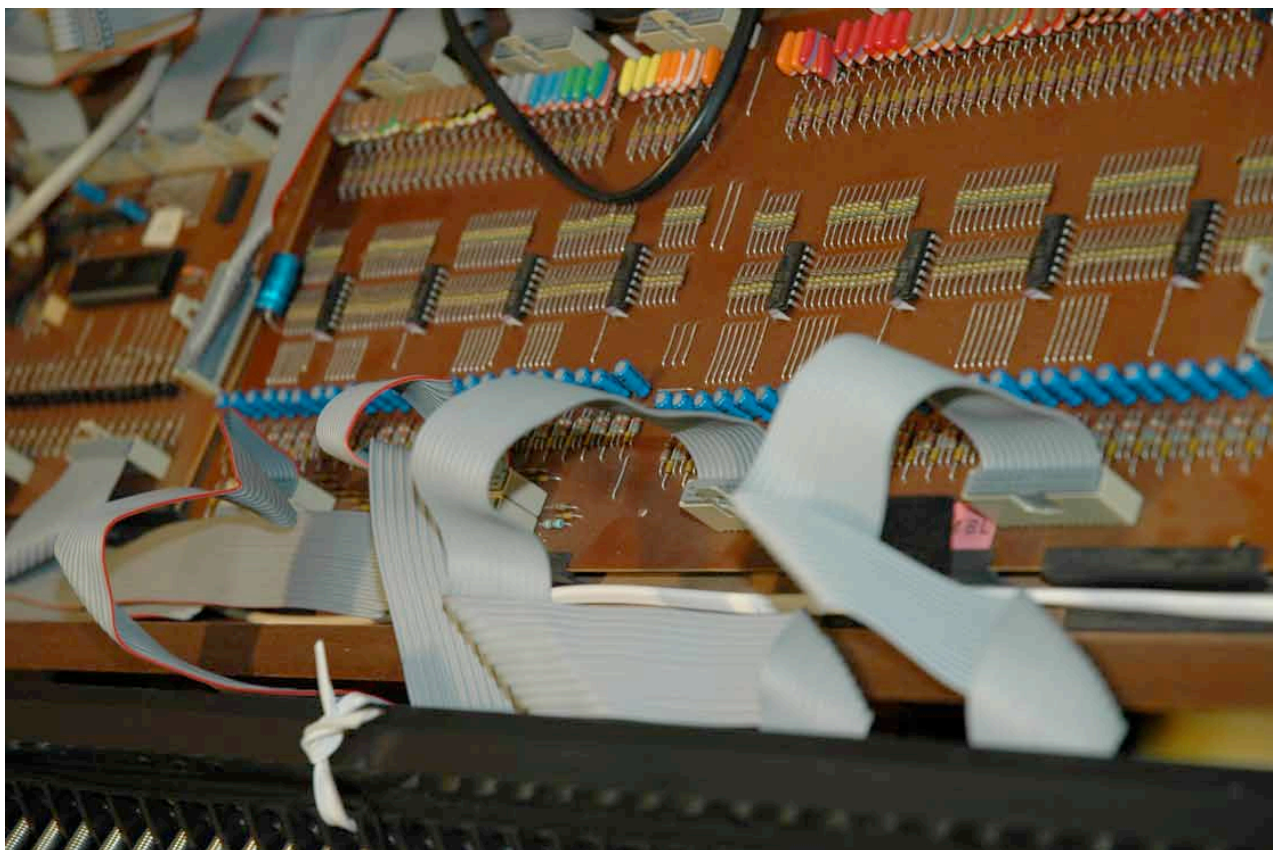
- power requirement for the midi kit and the interface board **SEE PIC 5**
- need to remove entire keyboard, remove the two screws **SEE PIC 6**
- remove all connector from the “divider board” **SEE PIC 7**



PIC 5

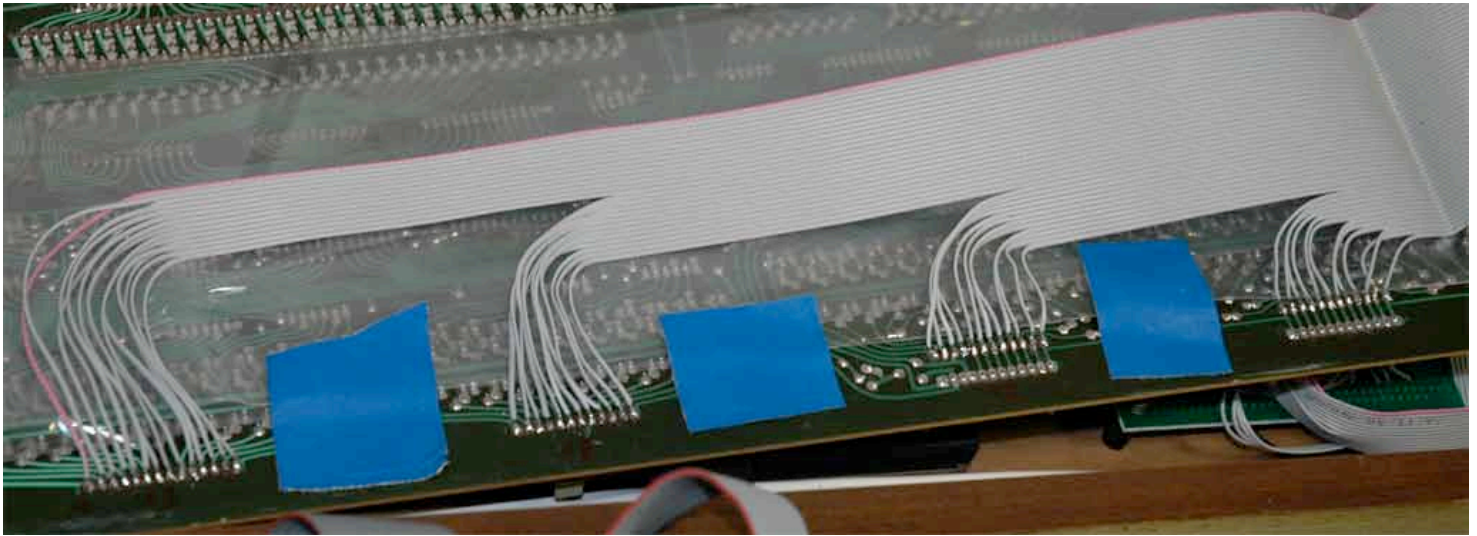
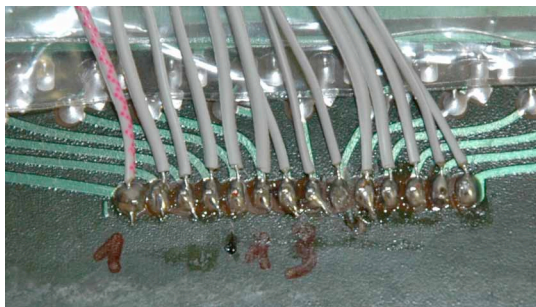
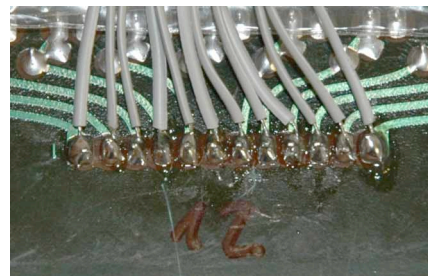
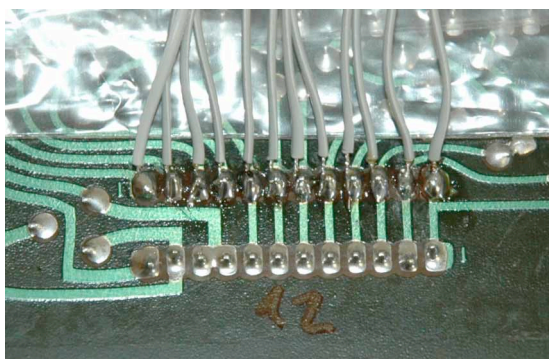
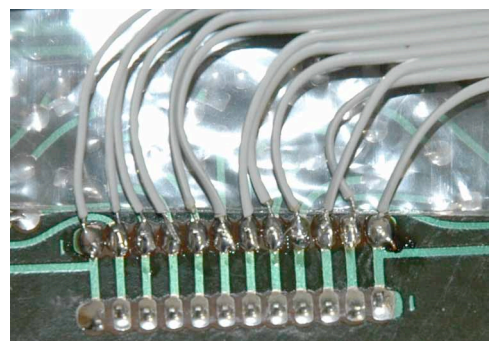


PIC 6

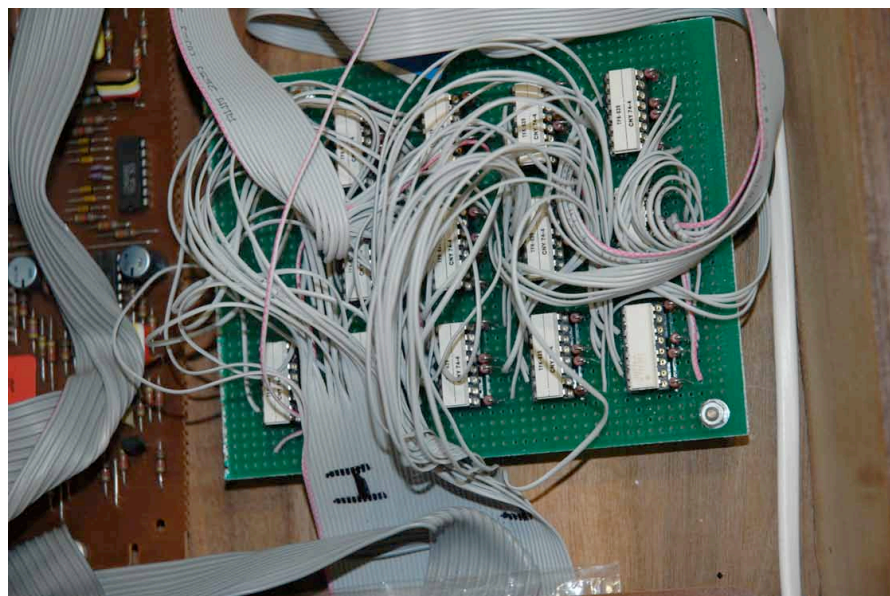


PIC 7

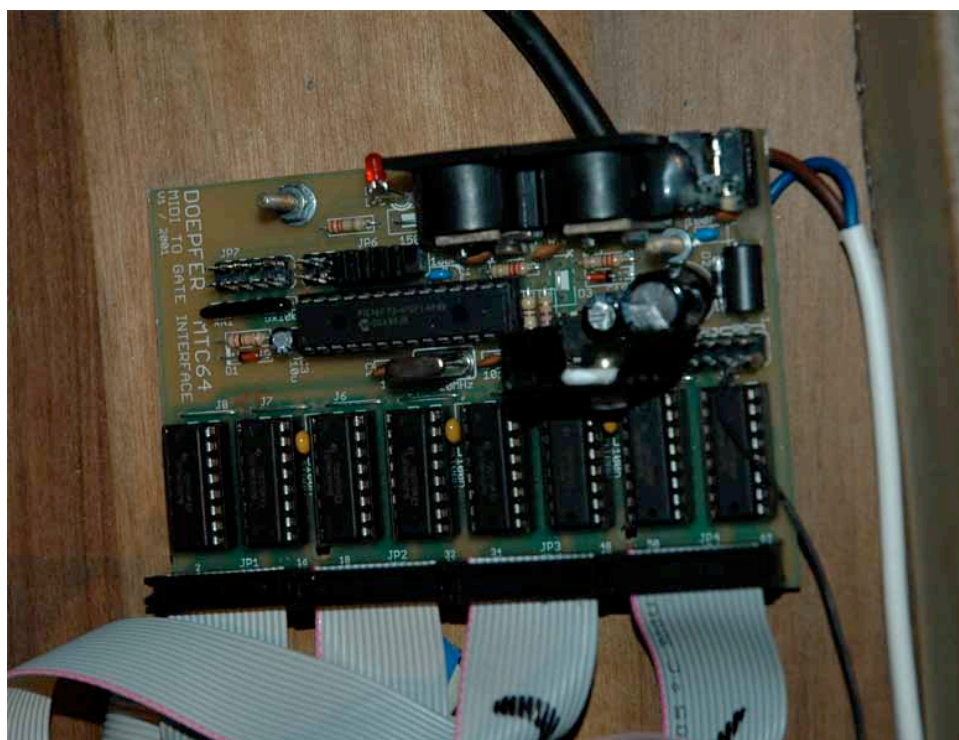
- install the flat cable, remark the red wire for the common signal **SEE PIC 8**
- first have 13 wires, second, third and four have 12 wires **SEE PIC 9...12**

**PIC 8****PIC 9****PIC 10****PIC 11****PIC 12**

- connection between the “divider board” and the interface board **SEE PIC 13**
- connection between the interface board and the midi kit **SEE PIC 14**

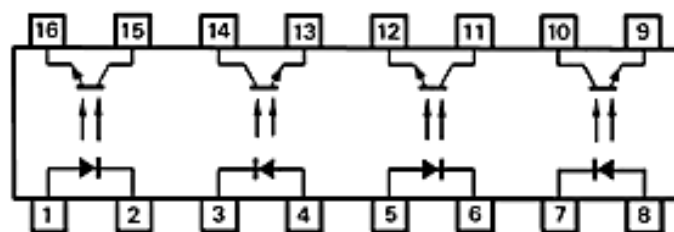
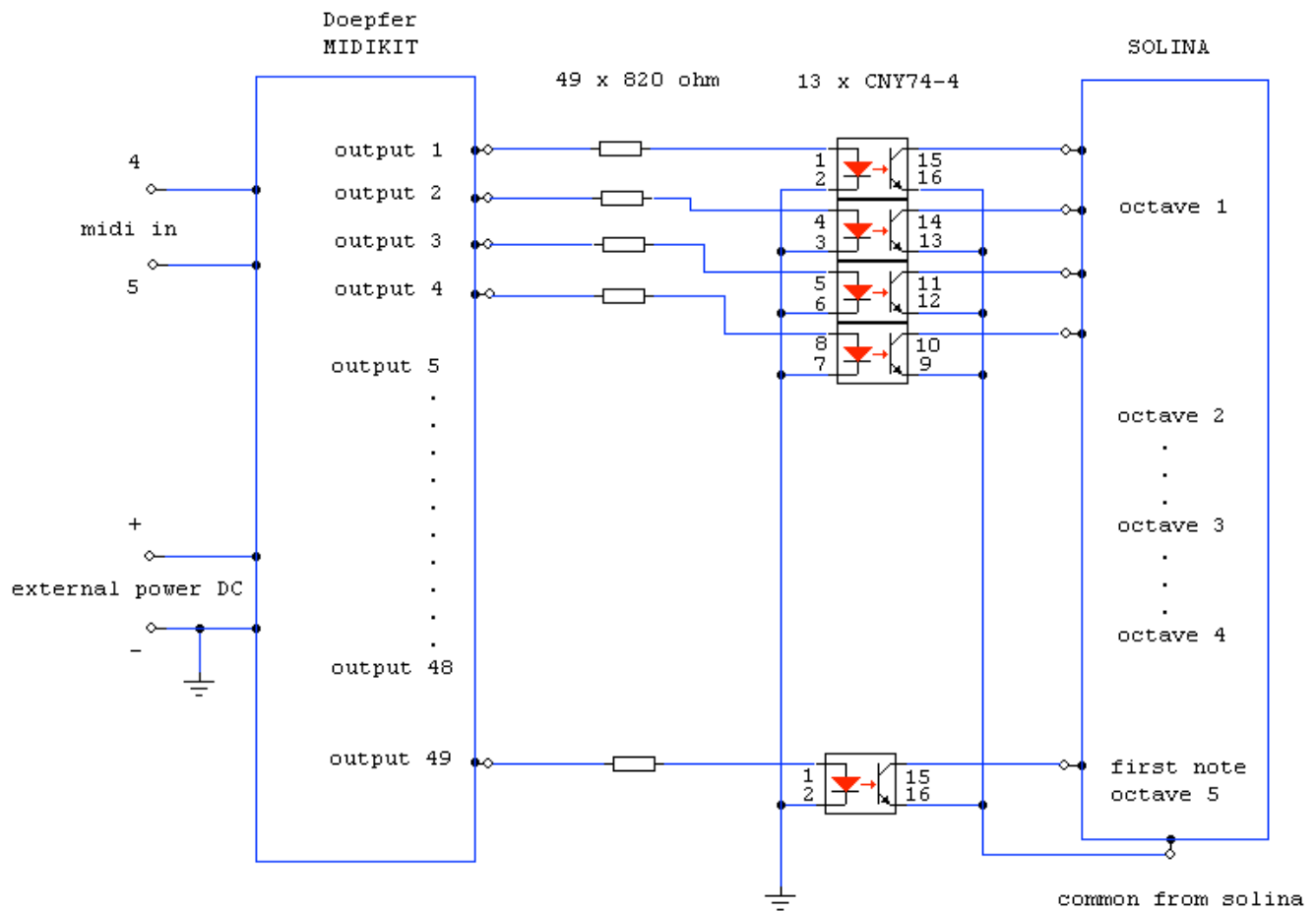


PIC 13



PIC 14

4. Electronic Schematic



CNY 74-4

5. Doepfer Midi kit Configuration – MTC 64 (midi to contact)

- output triggering by : select note
- polarity settings for outputs : jumper removed (active = +5V)
- midi channel selection : select 1 to 16
- note number transpose : jumper removed

more informations about MTC 64

http://www.doepfer.de/pdf/MTC64_man.pdf

